

(1) (2) (3)
 SMR Federal
 Code Stock
 Number

DESCRIPTION

TM9-2320-211-34P

(4) (5) (6)

(7)

(8) (9) (10)

of inc. allowance

allowance

alw maint

meas in

per alw

Unit

100 per (a) (b)
 equip100 Figure Item

(a) (b) (c) (a) (b) (c) cnt- equipNo. No.

Reference Number & Mfr. Code

Usable On Code

1-20 21-5(51-10(1-20 21-5(51-10(gcy

1407-POWER STEERING GEAR ASSEMBLY-CONTINUED

NON-ILLUSTRATED-CONTINUED

P-F	2530-693-06	PARTS KIT,STEERING: 8333631 (19207) CONSISTING OF :	A	EA	V	*	*	*	*	*	*	15	30		
		1-SHIM 7351035 (19207)										102		5	
	2530-040-22	1-GASKET 7351020 (19207)										102		37	
	2530-740-91	1-GASKET 7409194 (19207)										102		41	
		1-SEAL 7418961 (19207)										102		49	
	5365-263-58	1-RING 7413537 (19207)										102		63	
		1-WASHER 7046593 (19207)										102		64	
	5330-298-13	2-GASKET 7368502 (19207)										102		65	
		1410-HYDRAULIC PUMP OR FLUID MOTOR ASSEMBLY													
P-F-R	2530-040-22	PUMP, HYDRAULIC STEERING: (EARLY GAS MODELS ONLY) 8329538 (19207)	AA	EA	1	*	*	*	*	*	*	8	20	103	1
P-F-R	2530-318-82	PUMP, HYDRAULIC STEERING: GEAR ASSEMBLY FOR LATE PRODUCTION VEHICLES WITHOUT SEPARATE RELIEF VALVE 7971028 (19207)	A	EA	1	*	*	*	*	*	*	8	20	103	1
P-F-R	2530-239-56	PUMP, HYDRAULIC STEERING: (GAS & DIESEL) (MULTIFUEL 5 GPM) 11640923 (19207)	A	EA	1	*	*	*	*	*	*	8	20	103	1
P-F-R	2530-075-33	PUMP, HYDRAULIC STEERING: (MULTIFUEL, 6 GPM) 109352665 (19207)	AB	EA	1	*	*	*	*	*	*	8	20	103	1
P-F	5305-269-32	SCREW, CAP, HEXAGON: MS70925-70 (96906)	A	EA	2	*	*	*	*	*	*	6	10	103	2
P-F	5310-637-95	WASHER, LOCK: MS35338-46 (96906)	A	EA	2	*	*	*	*	*	*	6	10	103	3
X1		NUT, PLAIN: GEAR 443342 (21450)	A		1									103	4
X1		WASHER: 3X-X14315 (12204)	A		1									103	5
P-F	2530-741-11	GEAR, HELICAL: PUMP DRIVE 7411102 (19207)	A	EA	1	*	*	*	*	*	*	6	20	103	6
P-F	5330-582-70	SEAL, PLAIN, ENCASED: SHAFT 7409291 (19207)	A	EA	1	*	*	*	*	*	*	20	40	103	7

Current part is item (1) on diagram. Available at www.oshkoshequipment.com

3-102

TM 9-2320-211-34P

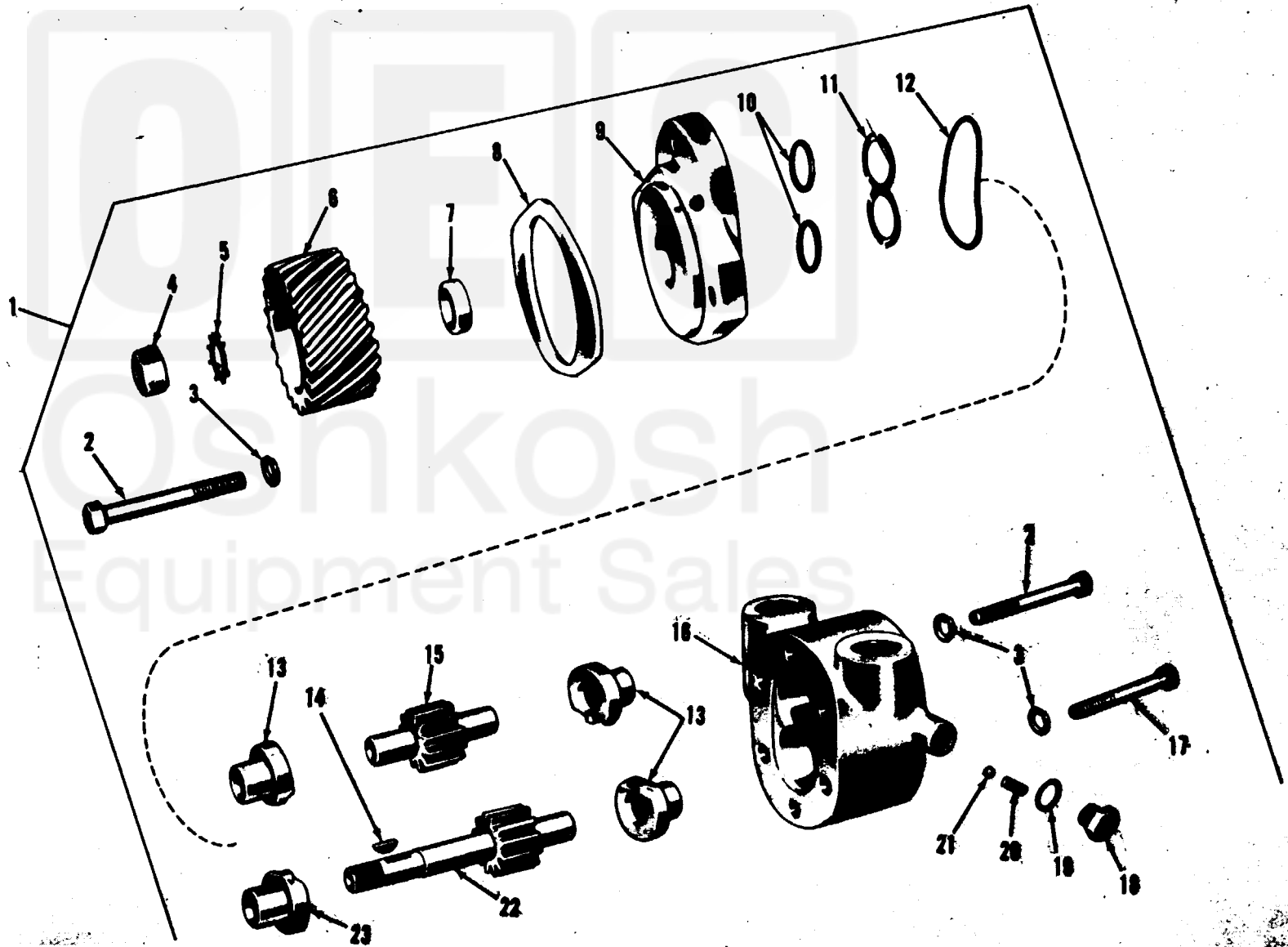


Figure 103. Hydraulic pump assembly.

Current part is item (1) on diagram. Available at www.oshkoshequipment.com